

# Automatic Veterinary Syringes

## ThaMa 216 Automatic Double Syringe

Fix Dosage: 1cc, 1.5cc, 2cc



### Operating Instructions:

This double automatic syringe is precise, reliable and accurate vaccinator, which allows vaccination of two different vaccines at two different dosages at once.

### Before Use:

1. It is recommended to sterilize the syringe before each use
2. Check that all screwed parts are tightened
3. Make sure that the valves, springs and washers are properly positioned into the base.

### To set the Dose:

1. Unscrew the banding screw (26) and pull out the syringe.
2. Unscrew the body cover (13) and pull out from the body (01).
3. Open the screw nut M4 (32) and unscrew it out – you can use the key-pin into the hole of the piston.
4. Take the spring (15), body cover (13) and put them on the new piston (11) with the measure you need.
5. Replace the cover body, spring on the new piston and screw the nut screw M4 in his position.
6. Put the O-Rings on the piston.
7. Insert the new pistons with the cover to the cylinder into the body.
8. Put the syringes back in their housings (25) – Make sure that the top nut is in its hole at the

pistons shove (21) – and screw the banding screw (26) tightly.

9. Make sure that you set the dosage in both syringes.

### How to set the Bridge 2 to 1 Needle:

1. Unscrew the needle adaptor (02) from both syringes – take care of the springs and valves.
2. Insert the springs (05) into the Bridge and the Valve balls (06) in the right position – springs in the bridge and balls in the body.
3. Close the bridge in to the body's and tight by hand.

### Care and Maintenance after Use:

At the end of every vaccination day:

1. Dismount the needles from the syringe
2. Take out the syringes from the syringes housing (unscrew No. 26).

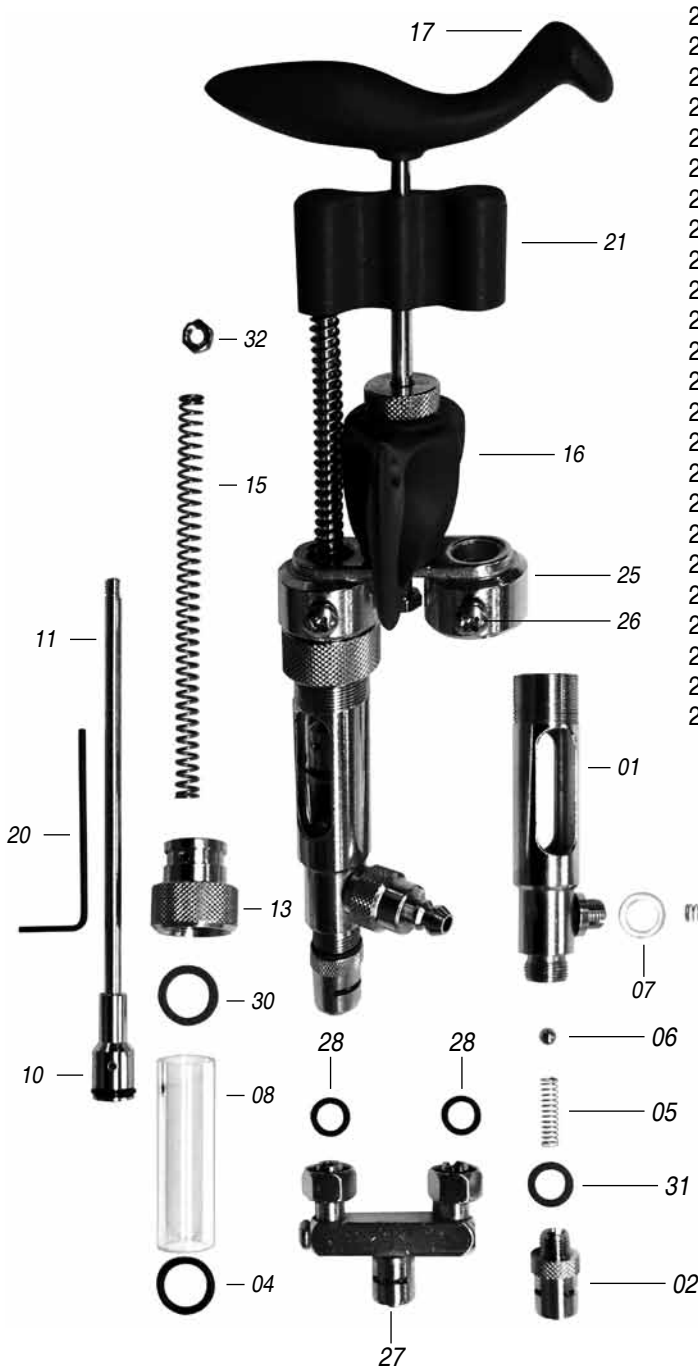
**Do not open the upper handle for cleaning**

3. Open the body cover and wash it, open the luer lock needle adaptor and tubing valve housing- wash them in clear water
4. Before using again, check that all the parts are in their place and put a drop of castor oil (supplied) on the O-Ring

**Make sure that you don't loss the small parts: vales, spring and valves plastic washer**

# ThaMa 216

## Automatic Double Syringe



- 216 -01 Syringe body
- 216 -02 Luer lock needle adaptor
- 216 -03 Tubing valve housing
- 216 -04 Cylinder washer
- 216 -05 Valve spring
- 216 -06 Valve stainless ball
- 216 -07 Valve plastic washer
- 216 -08 Glass cylinder
- 216 -10 Piston o-ring
- 216 -11 Piston shaft
- 216 -13 Body cover
- 216 -15 Handle spring
- 216 -16 Finger grip handle
- 216 -17 Upper handle
- 216 -20 Key pin
- 216 -21 Piston shove
- 216 -25 Syringe housing
- 216 -26 Banding screw
- 216 -27 Bridge 2 to 1
- 216 -28 o-ring
- 216 -30 Fiber washer
- 216 -31 Fiber Washer (SM)
- 216 -32 Screw nut M4
- 216 -99 Spare parts kit  
(Include: 216-05\*2,  
216-06\*2, 216-07\*2,  
216-30\*1, 216-04\*1,  
216-31\*1, 216-10\*2,  
216-26\*1, 216-32\*1)

### Piston shaft:

1cc	1110
1.5cc	1115
2cc	1120